

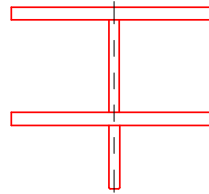
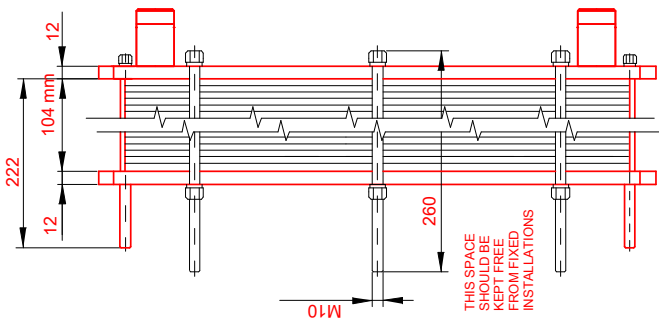
PRESSURE PLATE

(MOVABLE)
SECTION A-A



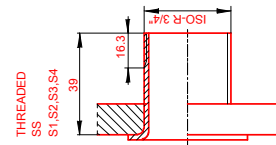
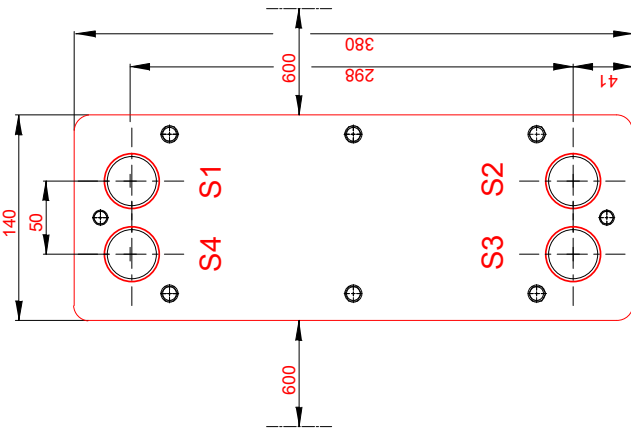
TEST PRESSURE
DESIGN PRESSURE
MAX TEMPERATURE
MIN TEMPERATURE
GASKET
PLATE MATERIAL
PLATE THICKNESS
HEAT LOAD

SIDE 1	SIDE 2
13.0 bar	13.0 bar
10.0 bar	10.0 bar
80.0 °C	60.0 °C
0.0 °C	0.0 °C
NBRB Clip-on	
ALLOY 316	
0.50 mm	
100.0 kW	



FRAME PLATE

(FIXED)



ALL DIMENSIONS IN MILLIMETERS Do not use this drawing for foundation bolting or piping layout.

SIDE	MEDIA	F.D.G.	INLET	TEMP.	OUTLET	TEMP.	FLOW RATE	PRESSURE DROP
1	Water	2	S1	80.0 °C	S2	60.0 °C	4.43 m³/h	29.4 kPa
2	Water	2	S3	10.0 °C	S4	60.0 °C	1.72 m³/h	5.5 kPa

PLATE HEAT EXCHANGER
T2-BFG

PRESSURE VESSEL APPROVAL PED



www.alfalaval.com

CUSTOMER NAME / REF. NO.

COMPANY / REF.
IPC - Industrial Power Cooling Ltd
HEC18/6959/MC

TOTAL LENGTH	275 mm
TOTAL WIDTH	140 mm
TOTAL HEIGHT	380 mm
WEIGHT WITH WATER	23.3 kg

RISKCATEGORY Article 4.3

DATE 9/10/2018
REV 0