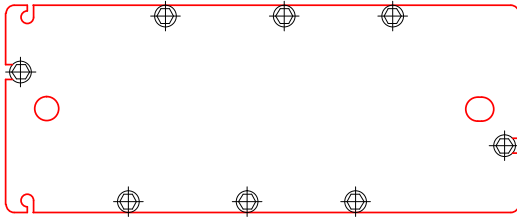
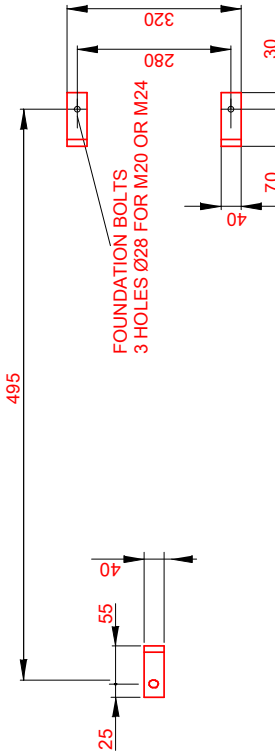
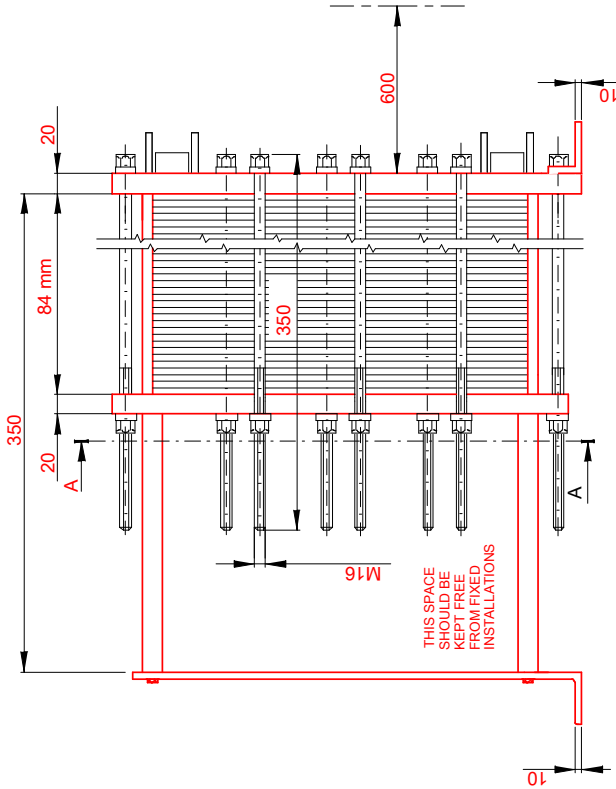


PRESSURE PLATE
(MOVABLE)
SECTION A-A

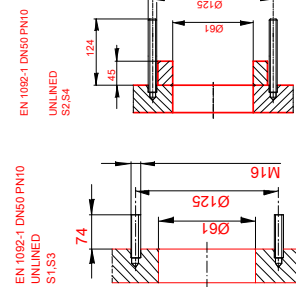
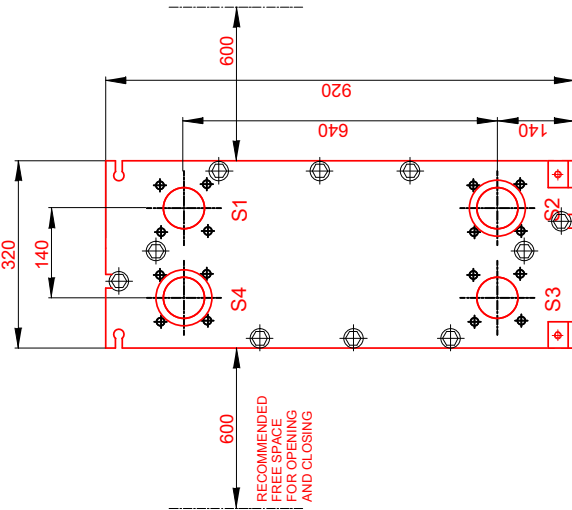


TEST PRESSURE
DESIGN PRESSURE
MAX TEMPERATURE
MIN TEMPERATURE
GASKET
PLATE MATERIAL
PLATE THICKNESS
HEAT LOAD

SIDE 1	SIDE 2
13.0 bar	13.0 bar
10.0 bar	10.0 bar
85.0 °C	85.0 °C
0.0 °C	0.0 °C
NBRP Clip-on	
ALLOY 316	
0.40 mm	
125.0 kW	



FRAME PLATE
(FIXED)



ALL DIMENSIONS IN MILLIMETERS Do not use this drawing for foundation bolting or piping layout.

SIDE	MEDIA	F.D.G.	INLET	TEMP.	OUTLET	TEMP.	FLOW RATE	PRESSURE DROP
1	Water	2	S1	85.0 °C	S2	74.0 °C	10.1 m³/h	26.5 kPa
2	Water	2	S3	71.0 °C	S4	82.0 °C	10.0 m³/h	26.5 kPa

PLATE HEAT EXCHANGER
M6-FM

PRESSURE VESSEL APPROVAL PED

www.alfalaval.com

CUSTOMER NAME / REF. NO.

COMPANY / REF.
IPC - Industrial Power Cooling Ltd
IPC18/6940/MC - CUMMINS

TOTAL LENGTH	550 mm
TOTAL WIDTH	320 mm
TOTAL HEIGHT	920 mm
WEIGHT WITH WATER	120 kg

RISKCATEGORY Article 4.3

DATE 9/6/2018
REV 0