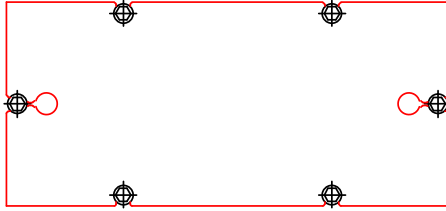
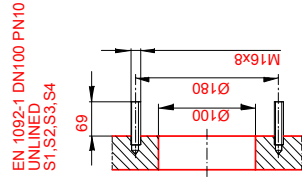
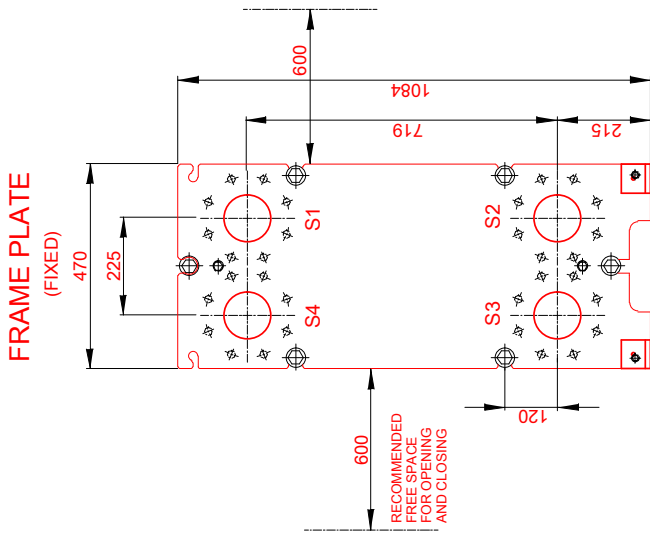
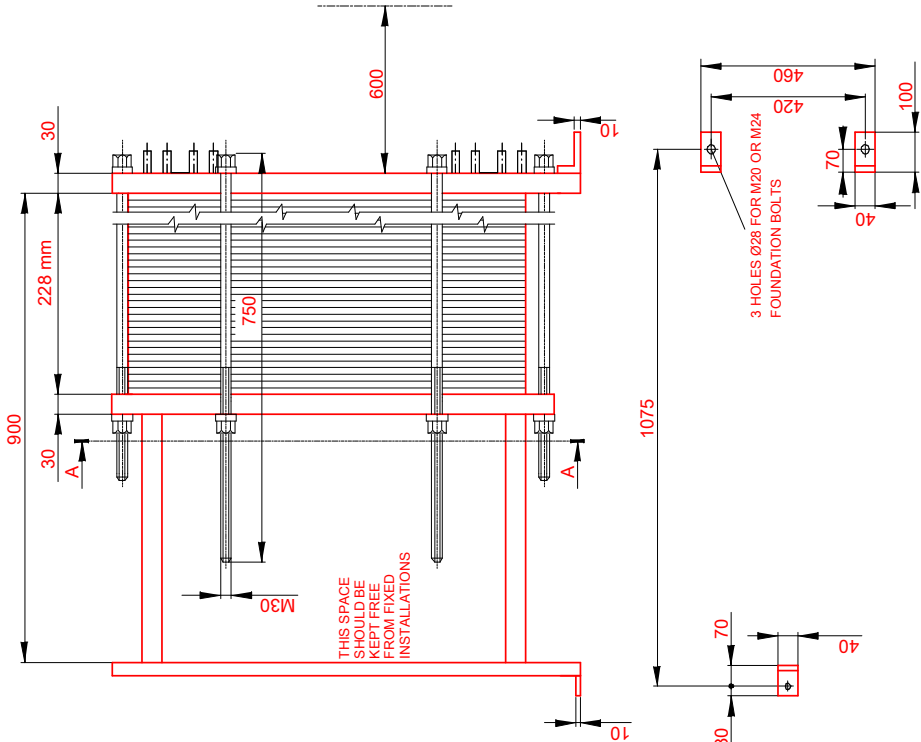


PRESSURE PLATE
(MOVABLE)
SECTION A-A



TEST PRESSURE	SIDE 1	SIDE 2
DESIGN PRESSURE	13.0 bar	13.0 bar
MAX TEMPERATURE	10.0 bar	10.0 bar
MIN TEMPERATURE	85.0 °C	80.0 °C
GASKET	0.0 °C	0.0 °C
PLATE MATERIAL	NBRB Clip-on	
PLATE THICKNESS	ALLOY 304	
HEAT LOAD	0.40 mm	
	500.0 kW	



EN 1092-1 DN100 PN10
UNLINED
S1,S2,S3,S4

ALL DIMENSIONS IN MILLIMETERS Do not use this drawing for foundation bolting or piping layout.

SIDE	MEDIA	F.D.G.	INLET	TEMP.	OUTLET	TEMP.	FLOW RATE	PRESSURE DROP
1	Water	2	S1	82.0 °C	S2	71.0 °C	40.3 m³/h	27.3 kPa
2	Water	2	S3	68.0 °C	S4	79.0 °C	40.0 m³/h	27.3 kPa



PLATE HEAT EXCHANGER
M10-BFM

PRESSURE VESSEL APPROVAL PED

www.alfalaval.com

CUSTOMER NAME / REF. NO.

COMPANY / REF.
IPC - Industrial Power Cooling Ltd
ALPHE18/6951/MC - ORE SOLUTIONS

TOTAL LENGTH	1135 mm
TOTAL WIDTH	470 mm
TOTAL HEIGHT	1084 mm
WEIGHT WITH WATER	418 kg

RISKCATEGORY Article 4.3

DATE 9/4/2018
REV 0